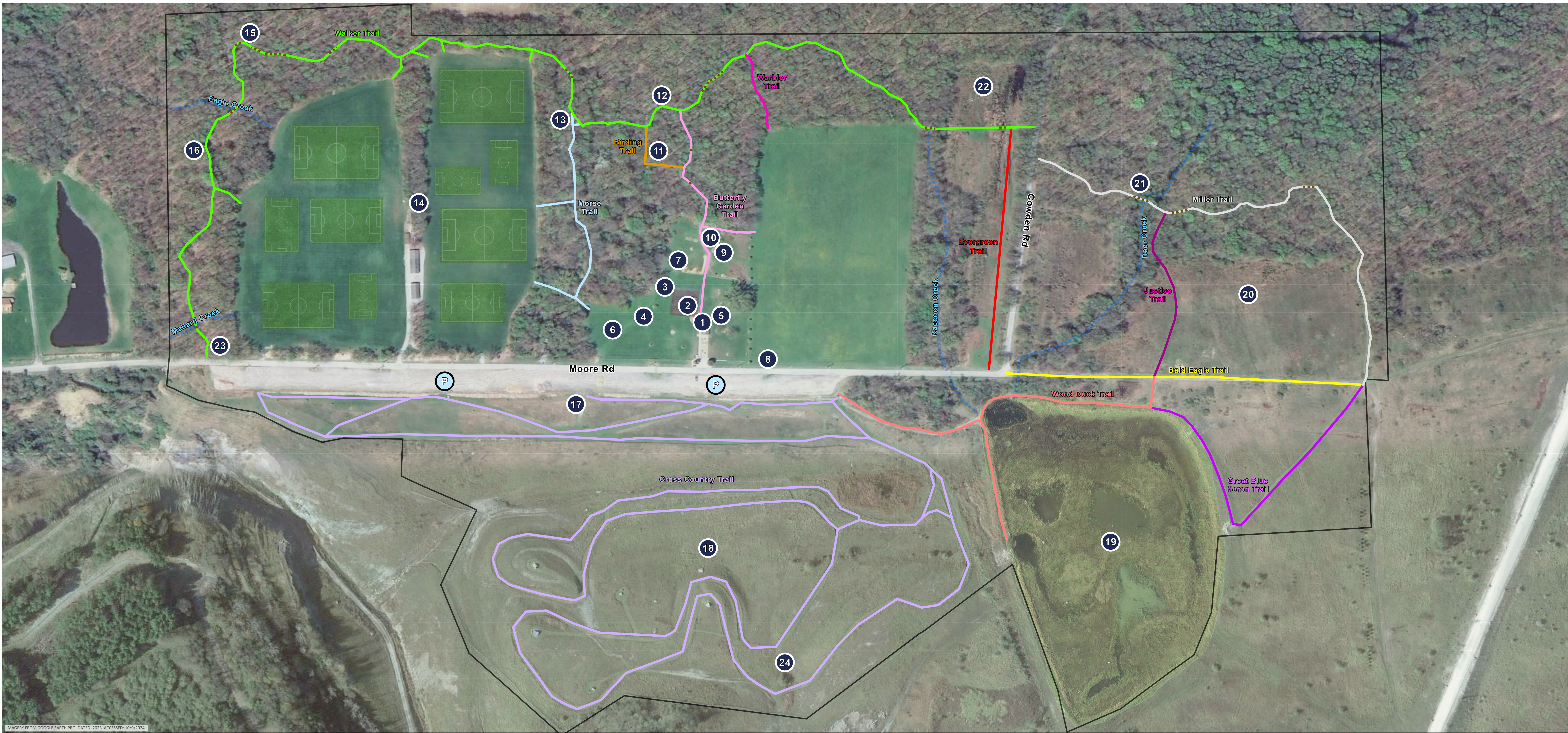


NORTH

POLAND TOWNSHIP PARK



Trail Name	Trail Mileage
BALD EAGLE TRAIL	0.18
BIRDING TRAIL	0.04
BUTTERFLY GARDEN TRAIL	0.14
CROSS COUNTRY TRAIL	2.00
EVERGREEN TRAIL	0.13
GREAT BLUE HERON TRAIL	0.18
JUSTICE TRAIL	0.09
MILLER TRAIL	0.27
MORSE TRAIL	0.16
WALKER TRAIL	0.73
WARBLER TRAIL	0.04
WOOD DUCK TRAIL	0.25
BRIDGE	
STREAM	
PARK BOUNDARY	
PARKING	

- | Park Features | Park Features |
|-----------------------------|------------------------------|
| 1 OAK GROVE PAVILION | 13 HOSTA GARDEN |
| 2 PLAYGROUND | 14 SOCCER FIELDS |
| 3 GAGA COURT | 15 WILDLIFE BRUSH PILES |
| 4 CORNHOLE COURT | 16 CHESTNUT FOOD PLOT |
| 5 BOCCI BALL COURT | 17 SLED RIDING HILL |
| 6 SAND VOLLEYBALL COURT | 18 CROSS COUNTRY COURSE |
| 7 GAZEBO | 19 MITIGATION WETLAND |
| 8 PICKLEBALL COURTS | 20 BLUEBIRD MEADOW |
| 9 PRAIRIE GARDEN | 21 VERNAL POOL |
| 10 BUTTERFLY GARDEN | 22 PURPLE MARTIN COLONY |
| 11 WILDLIFE FEEDING STATION | 23 TREE IDENTIFICATION TRAIL |
| 12 FERN GARDEN | 24 CHIMNEY SWIFT TOWER |



SCAN ME TO VISIT POLAND TOWNSHIP PARK'S ONLINE INTERACTIVE MAP



Civil & Environmental Consultants, Inc.

